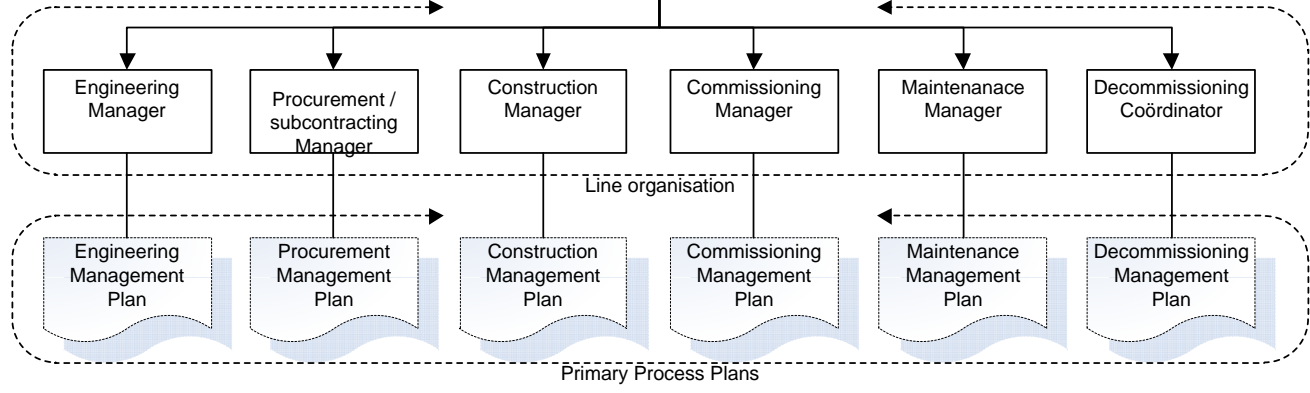


- Supportive projectplans
- Project Controls Plan
 - HSE Management Plan
 - Quality Management Plan
 - Risk Management Plan
 - Communication Management Plan
 - Contracts Management Plan
 - Documents & ICT Management Plan
 - Financial Management Plan
 - Configuration Management Plan

- Project support departments
- Project Controls Manager
 - HSE Manager
 - QA / QC Manager
 - Risico Manager
 - Communicatie Manager
 - Contract Manager
 - Document & ICT Manager
 - Financial Manager
 - Systems Engineer

Project Policy:
 The project policy is the reflection of the Mission, Vision, Strategy and Ambition of the Company and is the practical translation of the Stakeholder Requirements into an Project Approach.



© Copyright 2011
 Pro^N Partners

Document Model		
Rev-0	30-05-2011	P.J. Besel